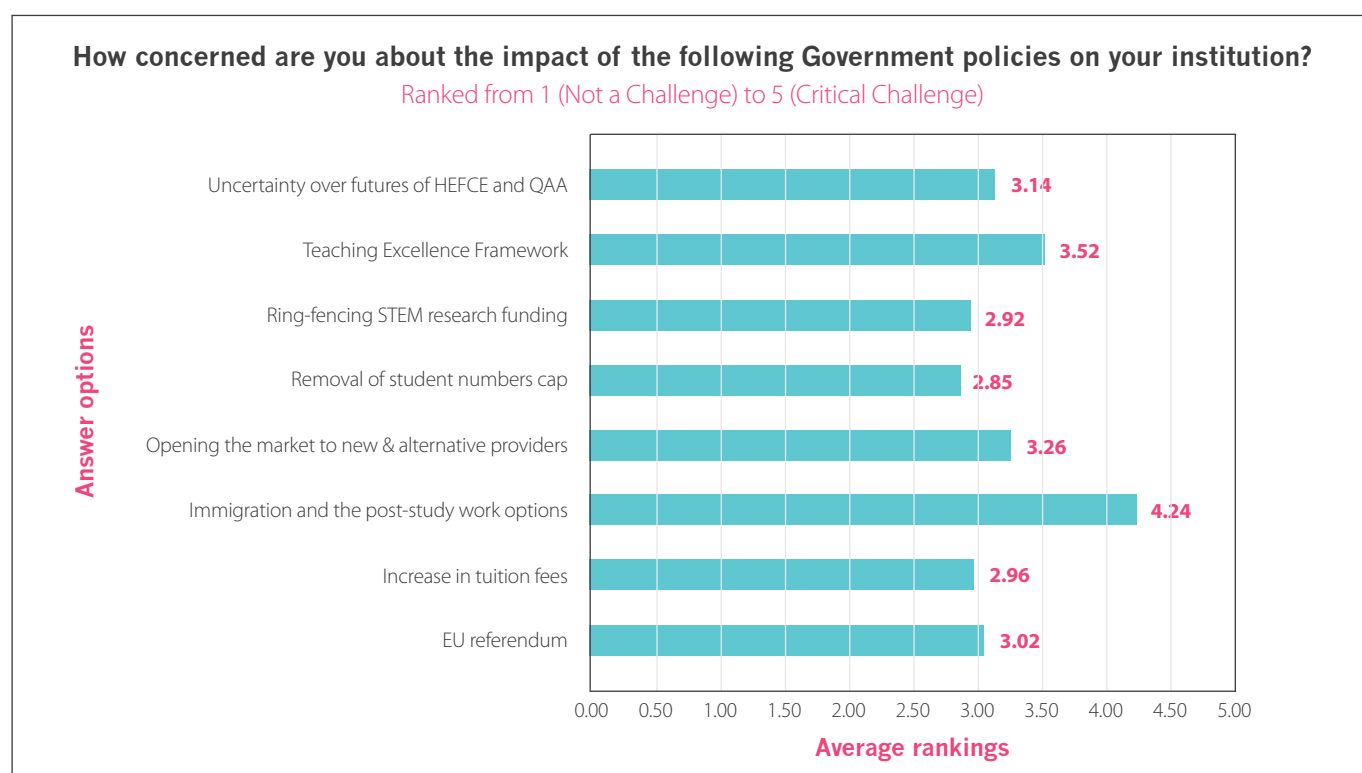
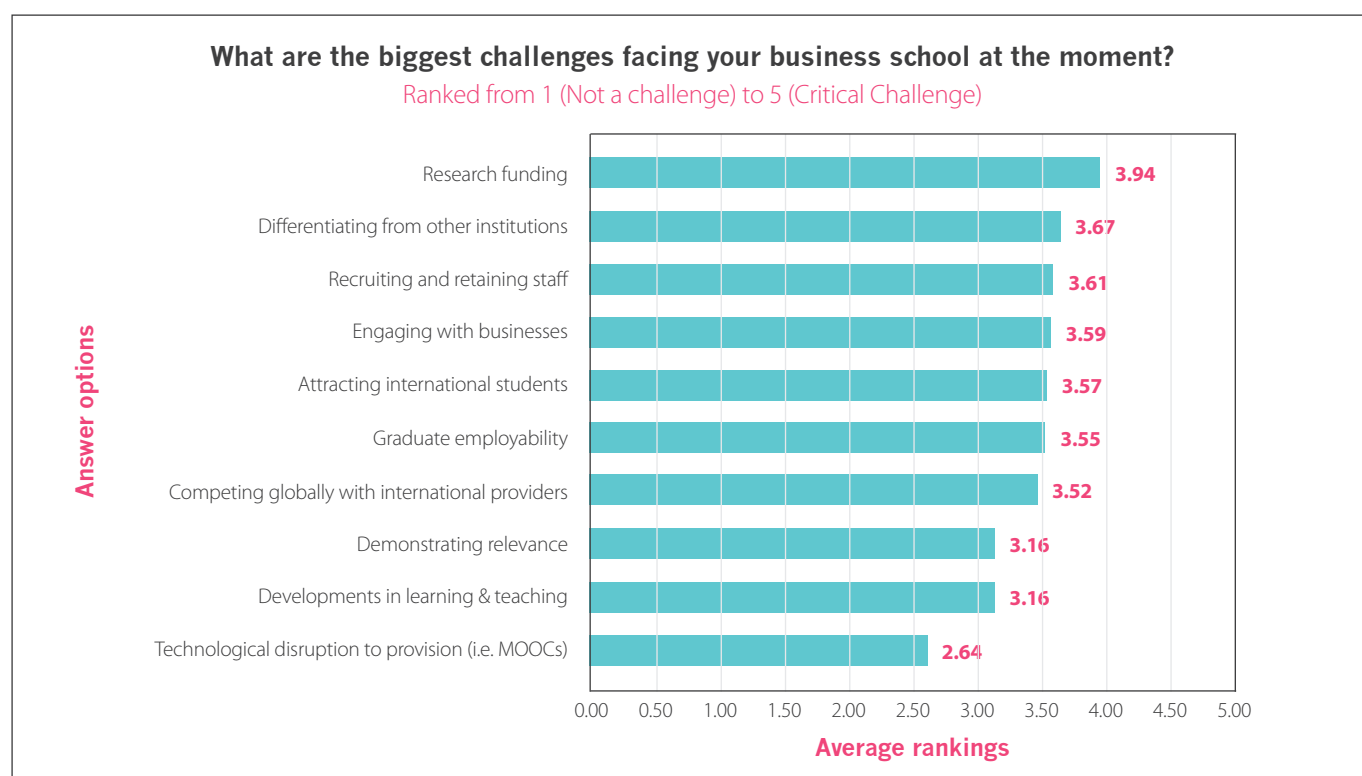




## ANNUAL MEMBERSHIP SURVEY 2015: RESULTS

## MEMBERSHIP SURVEY: RESULTS

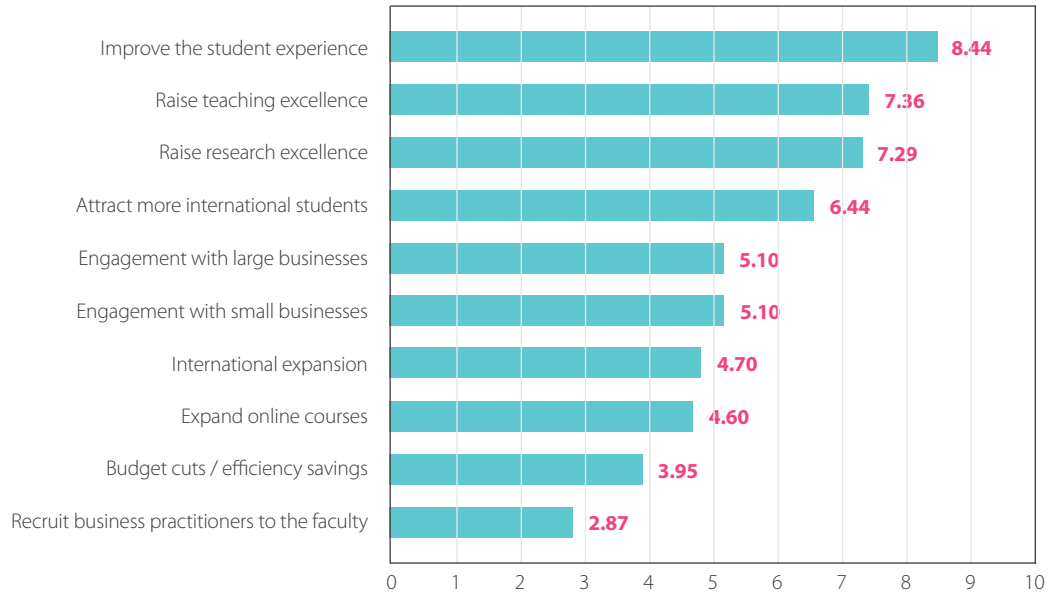
We are pleased to present the results of the 2015 Membership Survey. As part of a new direction, the survey is intended to provide an annual snapshot and insights into some of the key challenges and trends in the UK business school sector. Our thanks to all our members who took part.



### What are your strategic objectives over the next 3 years?

Answers show average level of priority where 10 is high

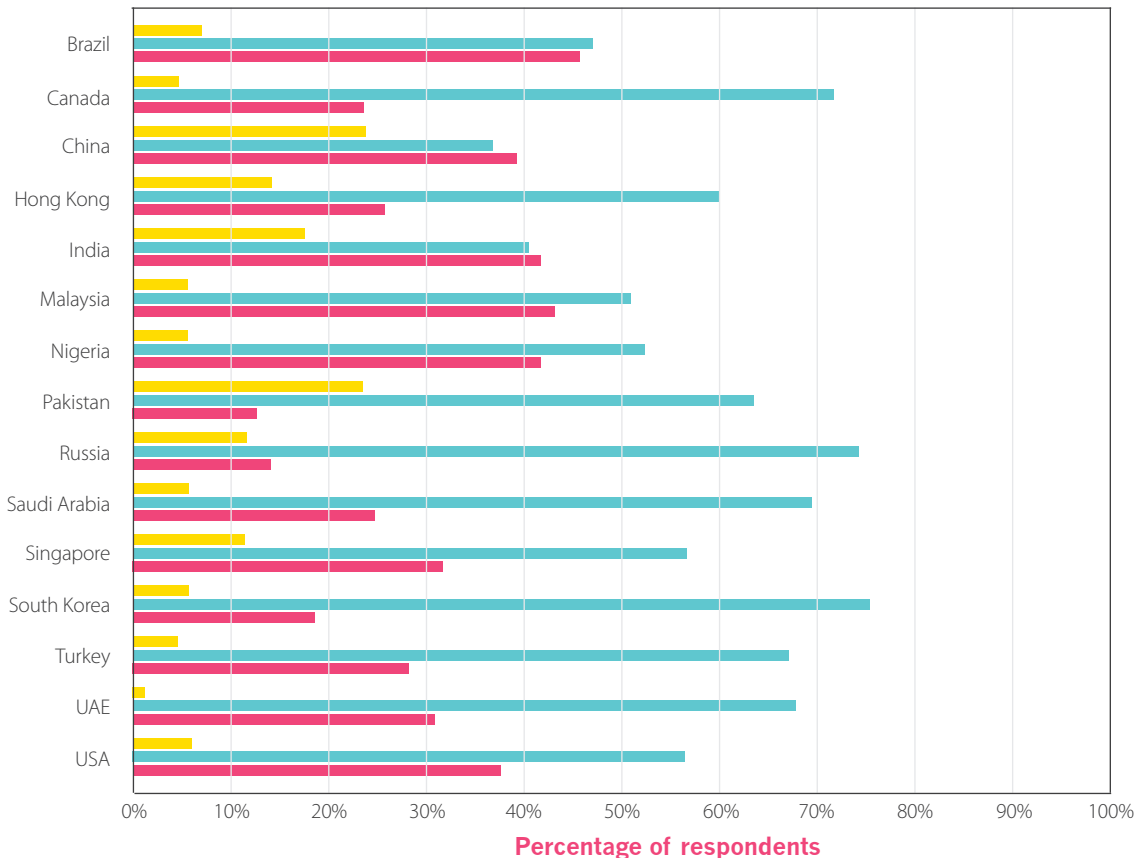
Answer options



### Which countries do you think international students will come from to study at your institution, over the next 3 years?

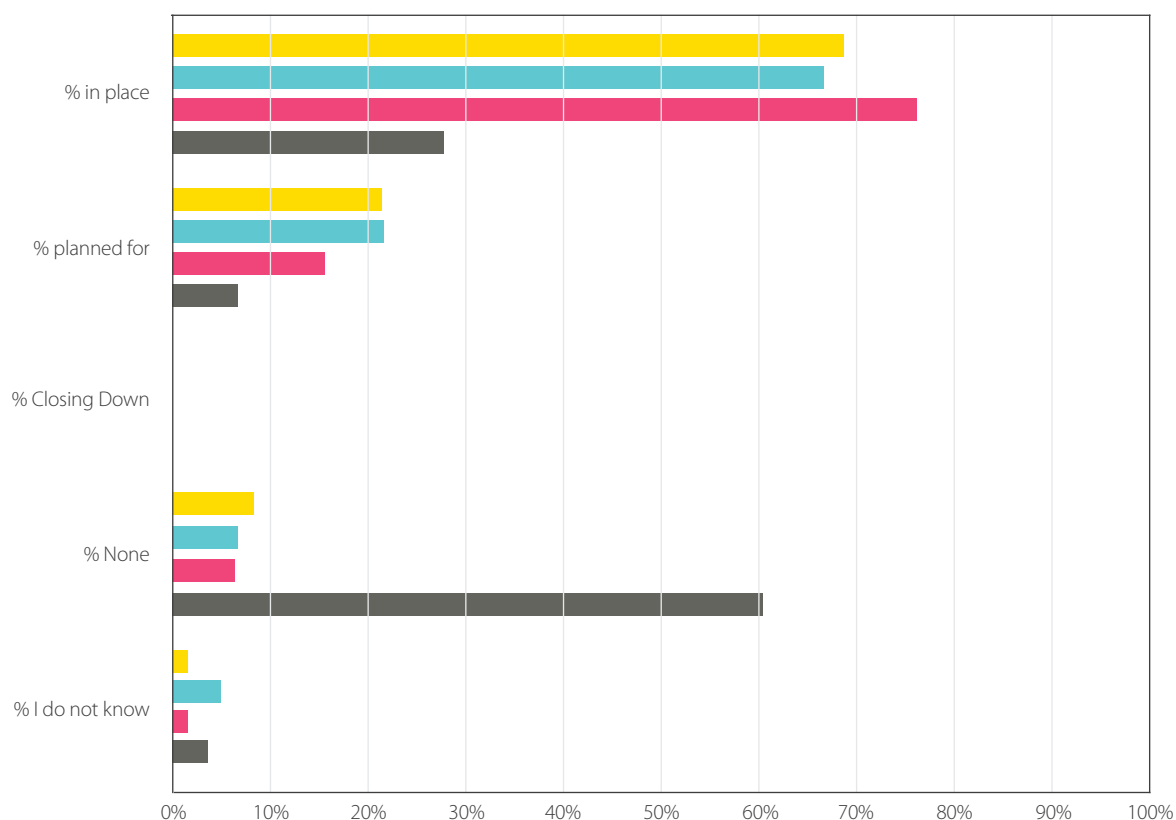
■ = % decreases ■ = % stay the same ■ = % increases

Countries where students come from

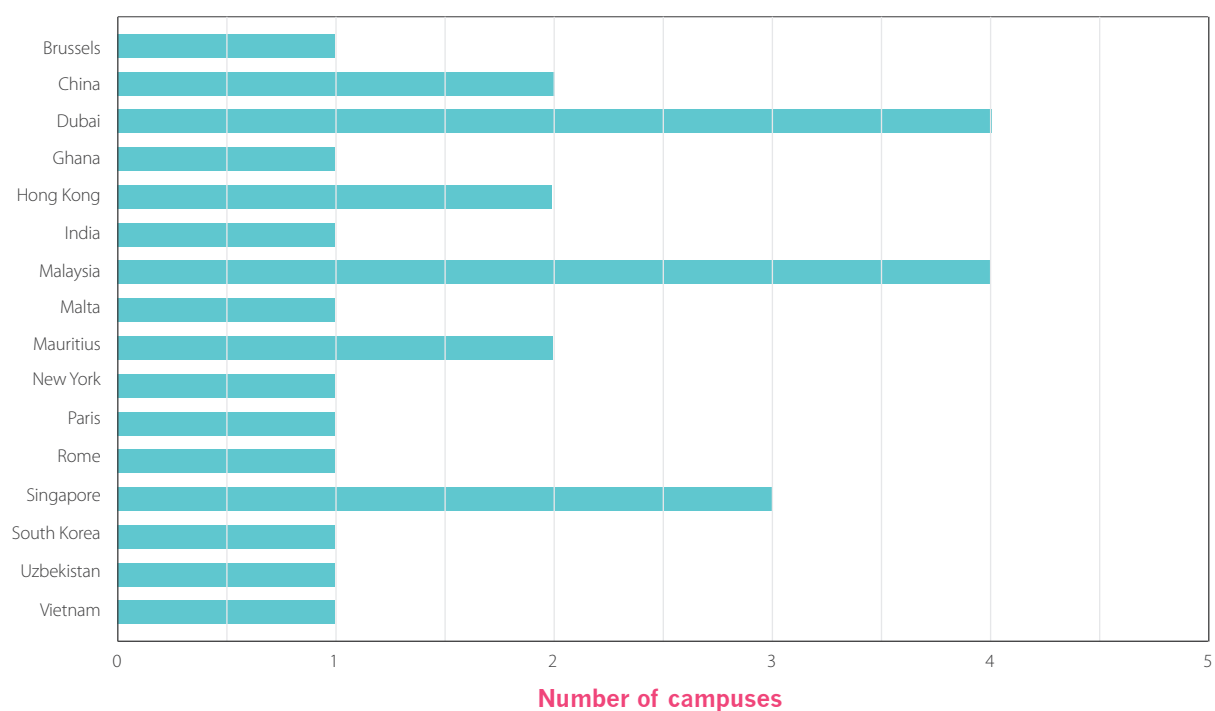


**If you have an internationalisation strategy, please tell us the status of your strategy from the options below**

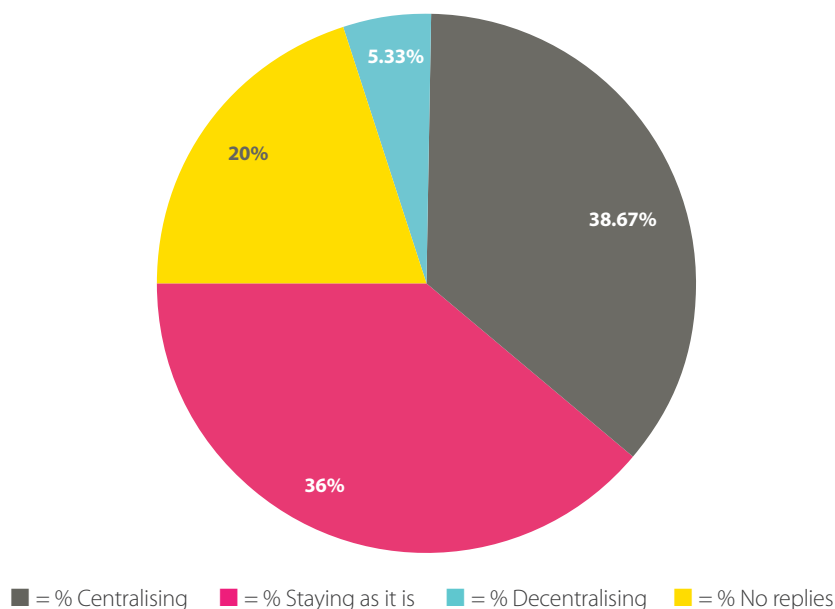
■ = Teaching links/agreements   ■ = Research links/agreements   ■ = Partnership with international institutions   ■ = Branch campuses



**Where are your international campuses located?**



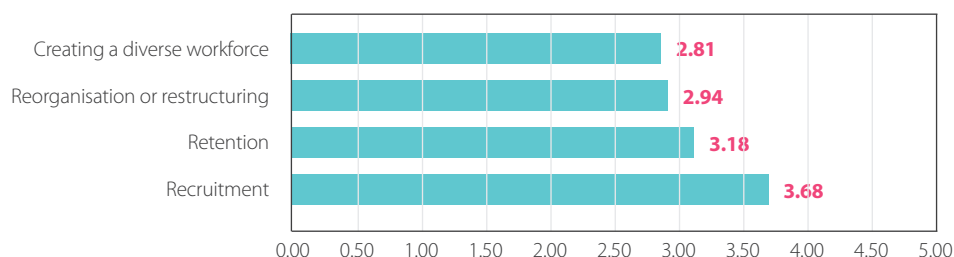
### Is your parent university centralising business school staff and resources?



### How challenging are the following staffing issues for your business school at the moment?

Ranked from 1 (Not a Challenge) to 5 (Critical Challenge)

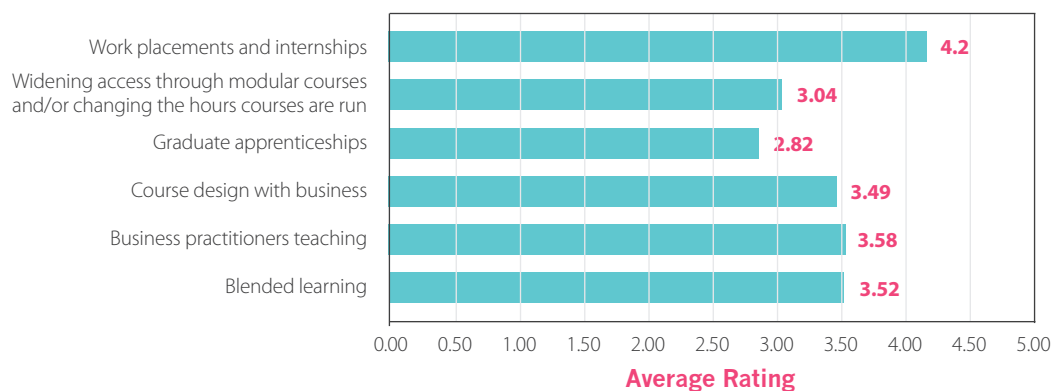
Answer options



### How important are the following to help make your programmes applied to the needs of businesses?

Ranked from 1 (Not Important) to 5 (Very Important)

Answer options



If you would like to propose some questions to be considered for the 2016 Survey, please send your ideas to Barney Roe [barney.roe@charteredabs.org](mailto:barney.roe@charteredabs.org)